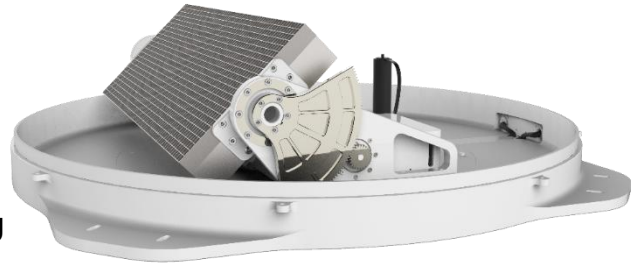


0.45m Ka Flat Land Mobile Antenna

T450-ka

- Ka band flat land mobile antenna
- Built in INS and GPS
- Smart design
- Easy operation
- Support auto tracking and manual tracking



Model	T450-ka	
Stablization	2 axis stable and 4 axis tracking	
Type	Panle waveguide horn array	
Dimension	Φ920mm×300mm	
Weight	≤40kg (transceiver is not included)	
Frequency	RX : 18.7 ~ 20.20GHz TX : 29.46 ~ 30.00GHz	
Gain	RX : 36.6dBi@12.50GHz TX : 40.2dBi@14.25GHz	
Polarization mode	Circular	
Axial ratio	≤ 1.5dB	
Rotation range	Azimuth : 360°continious	Elevation : 0° ~ 90°
	Roll: ~	Polarizaiton : 0° ~ 270°
Tracking mode	INS Measuremet,Signal tracking	
Tracking	≤0.5°RMS	
Reacquisition time	Blocking time≤60s , Acquisition time≤5s	
	blocking time≥300s , Acquisition time≤60s	
Power input	DC24V±5% , Power consumption≤250W(included 4W Transceiver)	
Control mode	Remote ACU control	
Operating Temperature	-40°C ~ 65°C	